

BIS-CD-420 STEREO D D D Total time: 74'30

**BRITTEN, Benjamin** (1913-1976)

- 1 **The Young Person's Guide to the Orchestra** 16'38  
Variations and Fugue on a Theme of Purcell, **Op.34**

1/1. Theme 2'12 — 1/2. Variation A 0'26 —  
1/3. Variation B 0'51 — 1/4. Variation C 0'45 —  
1/5. Variation D 0'55 — 1/6. Variation E 0'36 —  
1/7. Variation F 0'59 — 1/8. Variation G 1'10 —  
1/9. Variation H 1'03 — 1/10. Variation I 0'49 —  
1/11. Variation J 0'52 — 1/12. Variation K 0'29 —  
1/13. Variation L 0'58 — 1/14. Variation M 1'50 —  
1/15. Fugue 2'43

**Symphony for Cello and Orchestra, Op.68** 34'30

- 2 I. *Allegro maestoso* 12'51  
3 II. *Presto inquieto* 3'36  
4 III. *Adagio* — (*attacca*) 9'57  
5 IV. *Passacaglia. Andante allegro* 7'44  
**TRULS MØRK, cello**

**Four Sea-Interludes from the opera**  
**"Peter Grimes", Op.33a** 15'35

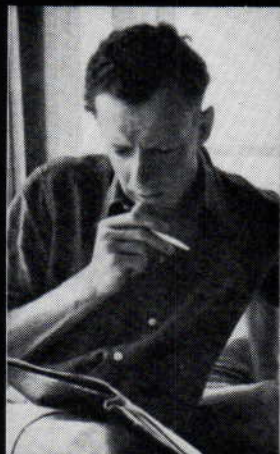
- 6 Dawn. *Tempo lento e tranquillo* 3'20  
7 Sunday Morning. *Allegro spiritoso* 3'51  
8 Moonlight. *Andante comodo e rubato* 3'50  
9 Storm. *Presto con fuoco* 4'24

**PÄRT, Arvo** (b. 1935)

- 10 **Cantus in memory of Benjamin Britten** (1977) 6'38  
für Streichorchester und eine Glocke

**BERGEN PHILHARMONIC ORCHESTRA**  
**NEEME JÄRVI, conductor**

Publishers: Boosey & Hawkes (Britten); Universal (Pärt)



COMPACT  
**disc**  
DIGITAL AUDIO

BRITTEN: YOUNG PERSON'S GUIDE TO THE ORCHESTRA;  
CELLO SYMPHONY ETC. — MØRK / BERGEN P.O. / JÄRVI

BIS-CD-420 —

BIS-CD-420 — BRITTEN: YOUNG PERSON'S GUIDE TO THE ORCHESTRA;  
CELLO SYMPHONY ETC. — MØRK / BERGEN P.O. / JÄRVI